

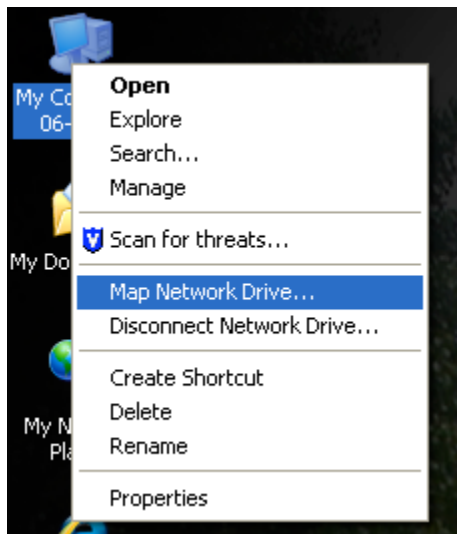
Installing Maple 13 on Windows XP

Installing Maple 13 on your computer should be a quick and painless process. Please follow these instructions carefully.

Connecting From Within Windows XP

- Single right mouse click on *My Computer* and select *Map Network Drive...*
- For the drive letter select S:
- For the folder enter in \\netspace.wheatonma.edu\shared
- Click on the link labeled *Connect using a different username*
- In the User Name field enter in WC\wXXXXXXXXX and replace wXXXXXXXXX with your Wheaton w ID.
- In the Password field enter in your email password
- Select *OK* then *Finish*
- On the S: drive go to the *software* folder

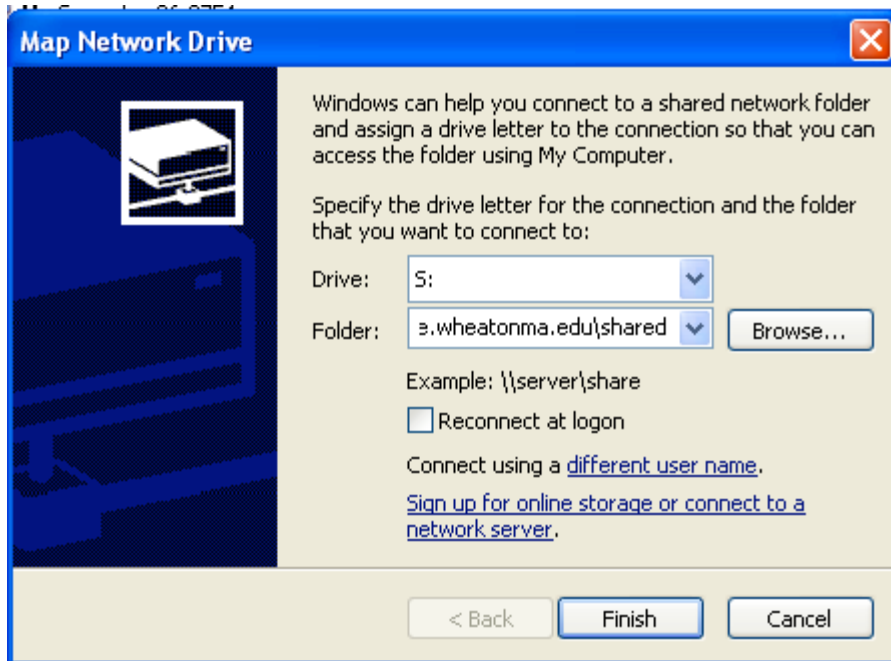
Below are additional images detailing the above steps.



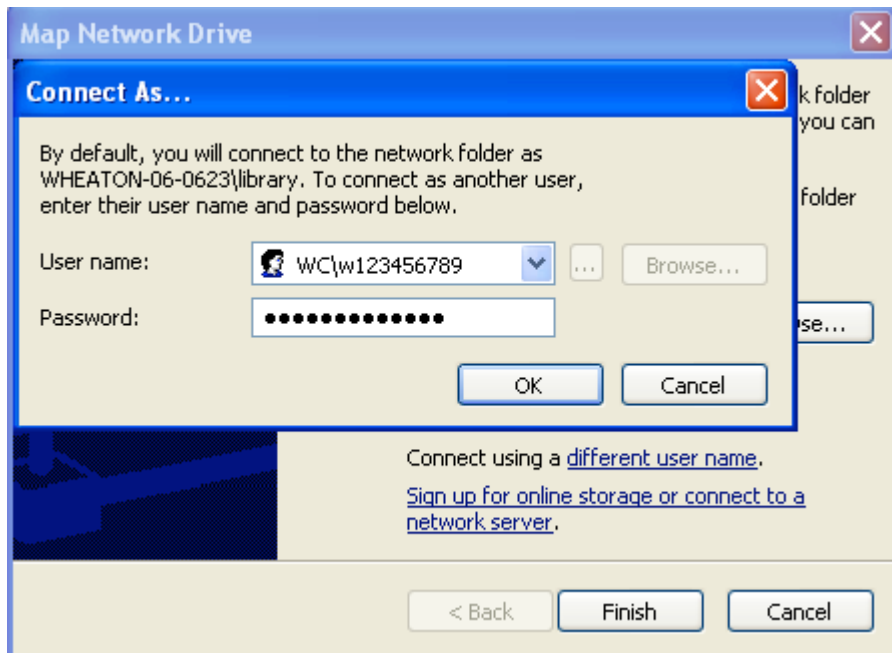
Right click on *My Computer* and select *Map Network Drive...*

Then select drive S: and for *Folder* enter:

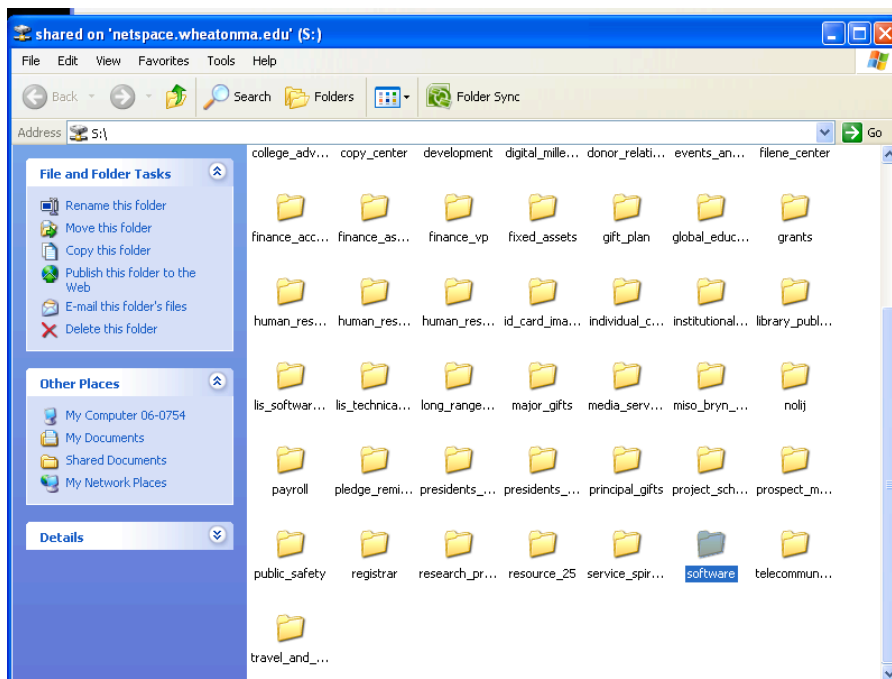
\\netspace.wheatonma.edu\shared



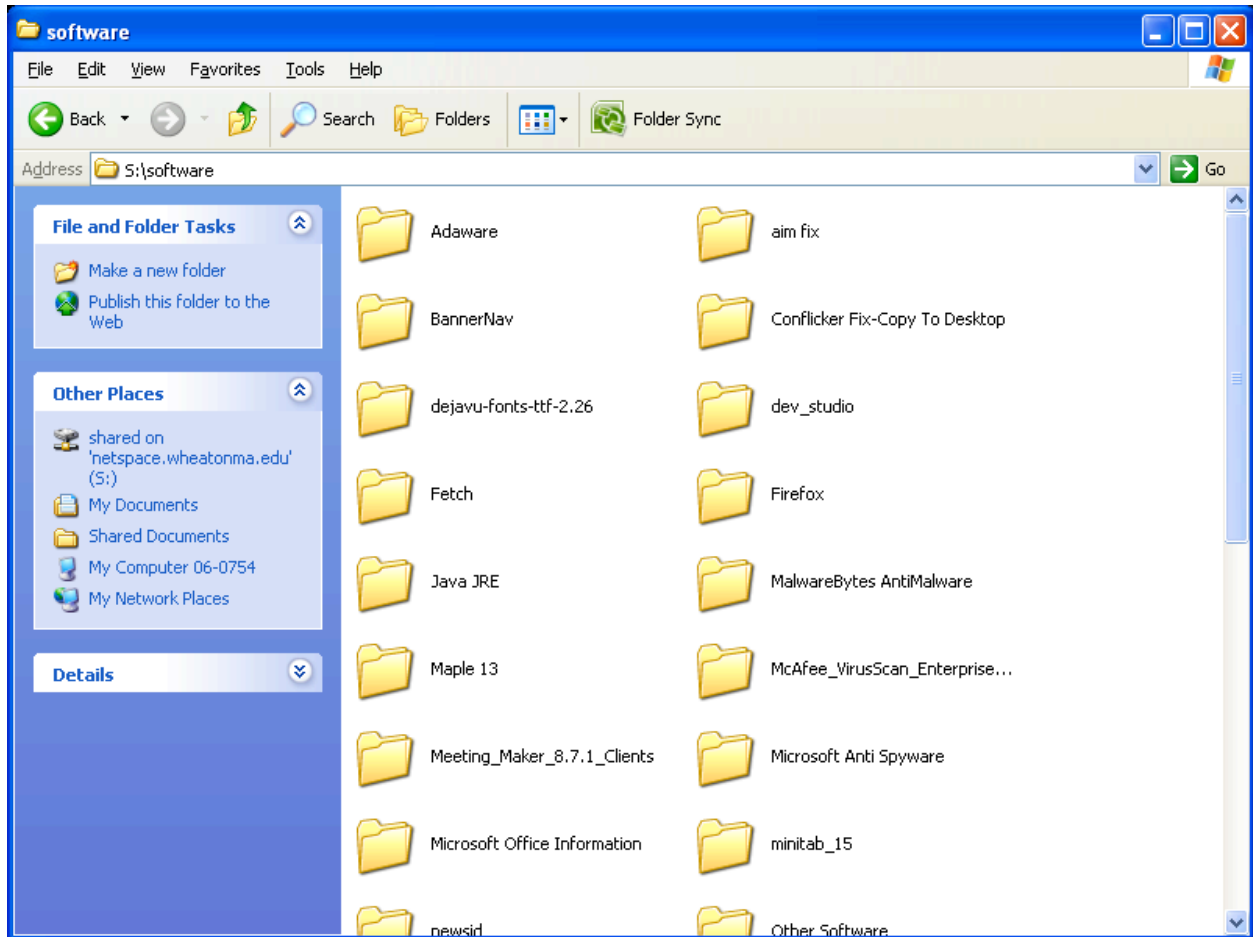
Select *Connect using a different user name*. Enter your Wheaton ID and webmail password. Be sure to include "WC\" in front of your Wheaton ID.



Select *OK* and then *Finish*. Wait a few moments and a new window should open. Scroll down to and open the *software* folder.



From *software* open the *Maple 13* folder.



From *Maple 13* open the *Windows* folder.

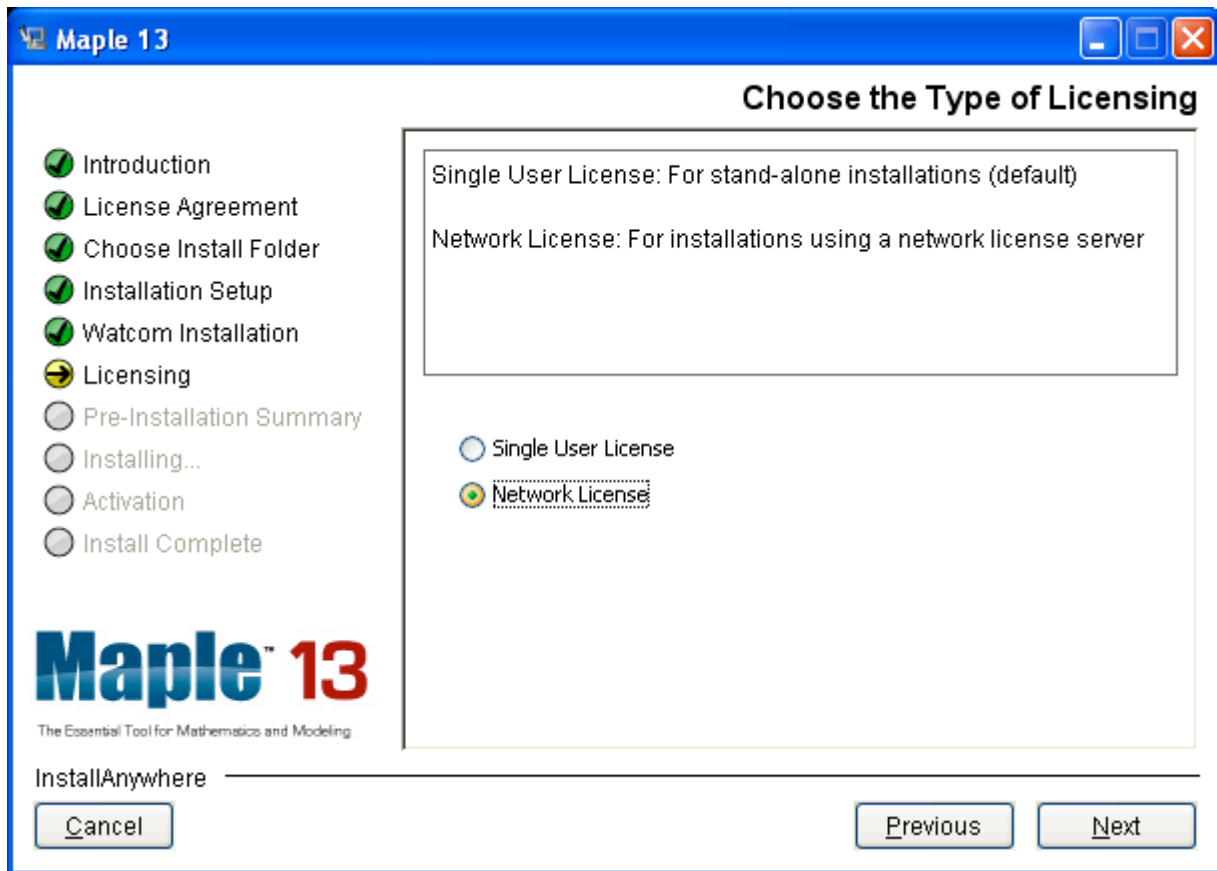
Open the *Disk1* folder.

Open the *InstData* folder.

Open the *VM* folder.

Open *Maple13WindowsInstaller*, and wait for *InstallAnywhere* to load. Select *Next* and accept the License Agreement. Continue through the process, making sure that *Full Installation* is selected, until you reach the *Licensing* step.

Select *Network License*.



Select *Next*, and then enter the following into the *License Server* field:

fls.wheatonma.edu



Continue to the next step and select *Install*. Maple will begin installing. It may take a few minutes to complete. Maple 13 can then be found in *My Computer* under *Program Files*, and also as a shortcut on your desktop if you selected that option.

You must be connected to the campus network via a wired or wireless connection in order to use Maple.

If you have problems with installing Maple, please email ddemelo@wheatonma.edu with details about your installation problem.