

Installing Maple 13 on a Macintosh

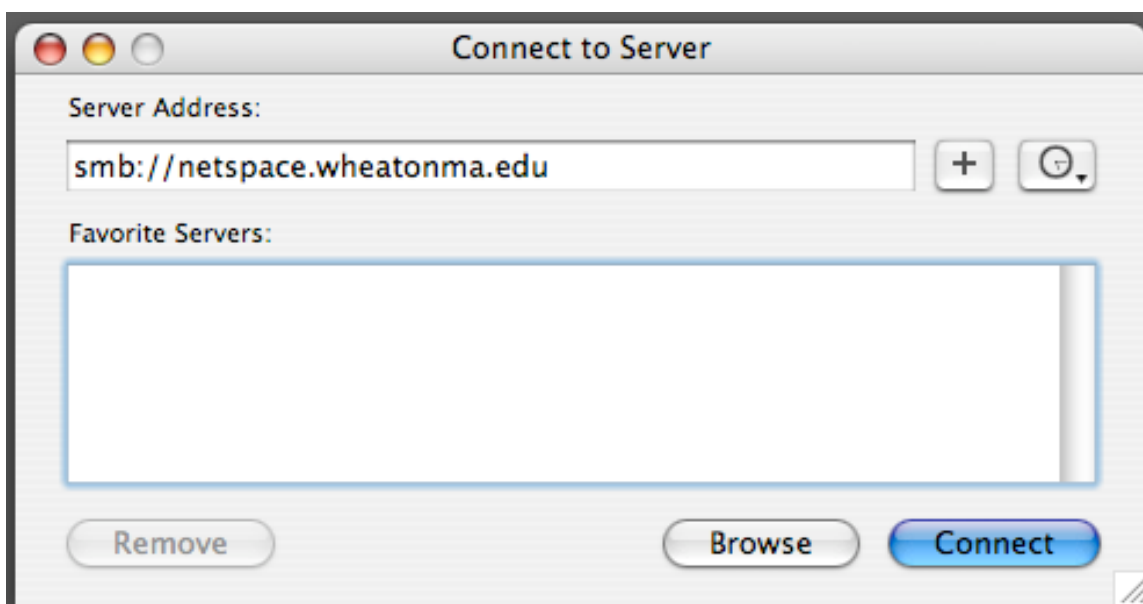
Installing Maple 13 on your computer should be a quick and painless process. Please follow these instructions carefully.

--

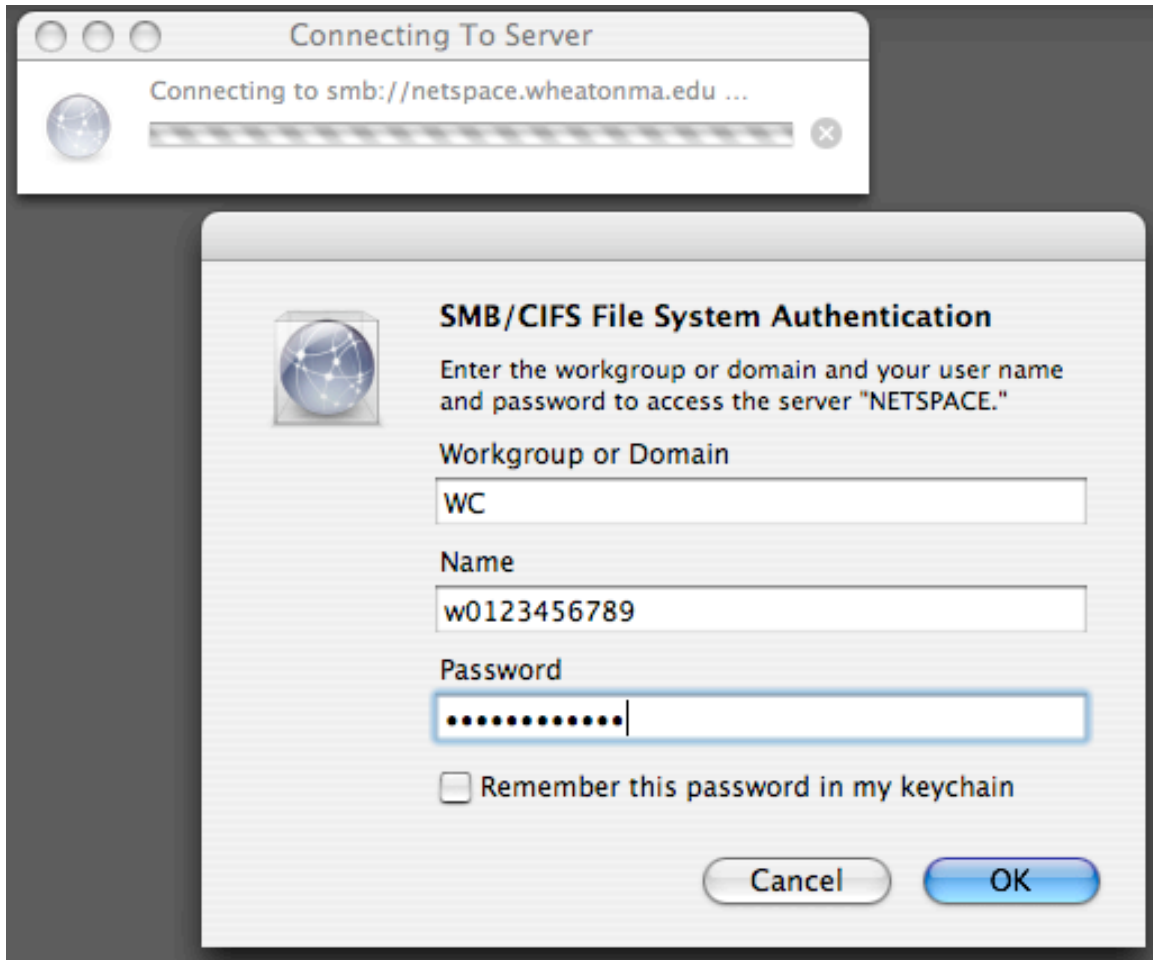
In the Finder, select the **Go** menu, and choose “**Connect to Server...**” Alternatively you can use **command – k**

When the window opens, type in the following server address: `smb://netspace.wheatonma.edu`

Then select “**Connect**”



The following window will open

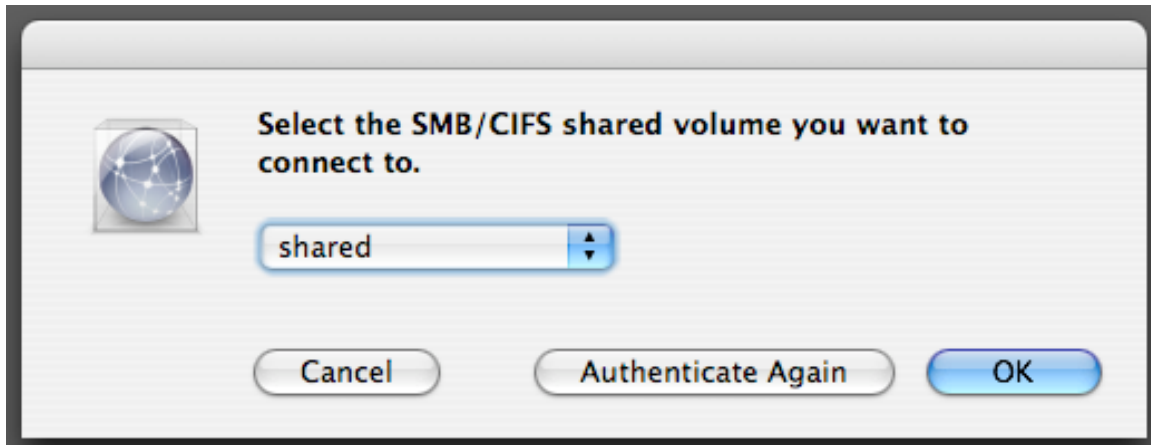


“**Workgroup or Domain**” should automatically be filled out. If not enter “WC”

Under “**Name**” enter your Wheaton College ID number, and your Webmail password under “**Password**”

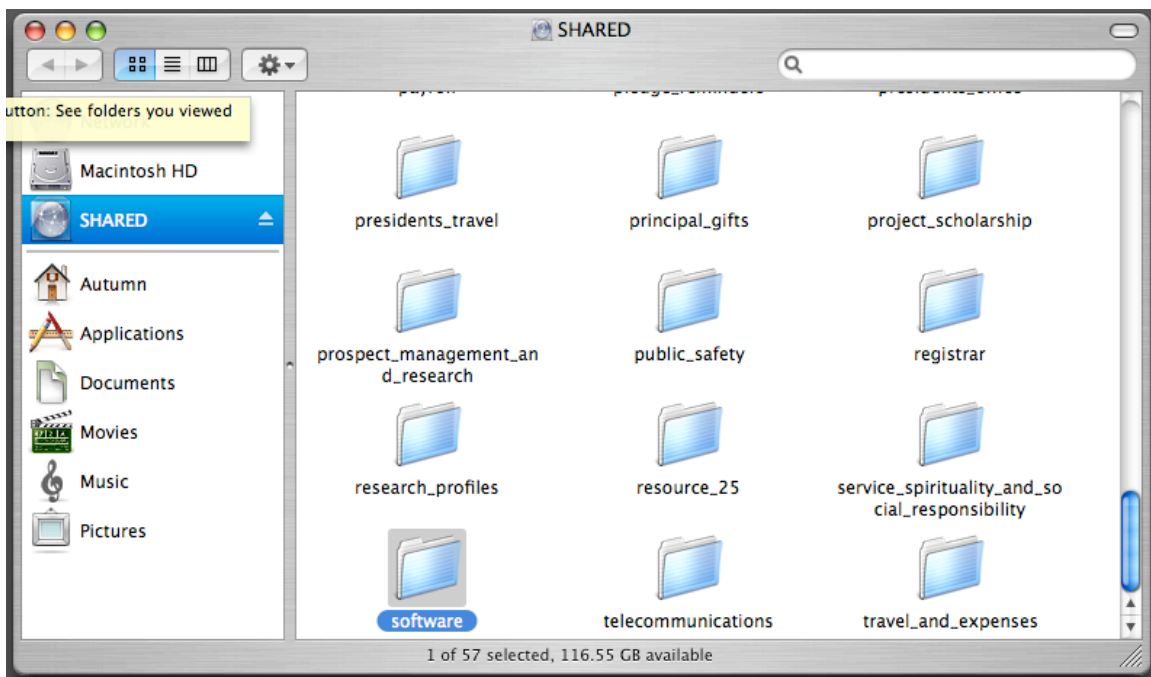
Select “**OK**”

A new window will open. Select the choice “**shared**” from the drop-down menu

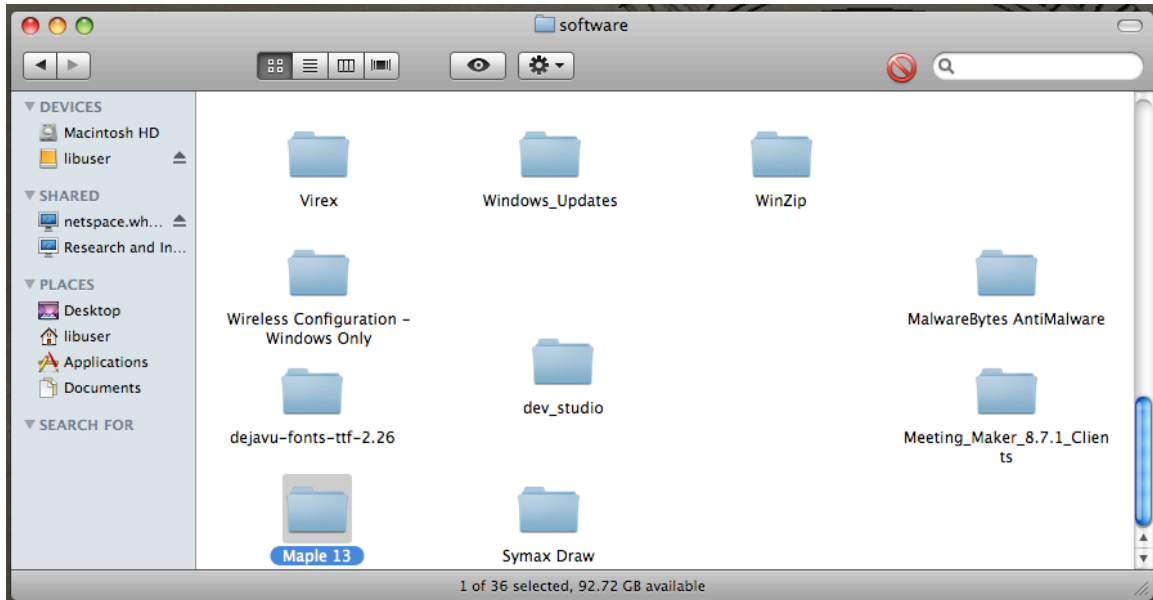


Select **“OK”**

A new window will open. Scroll down to locate and open the folder titled **“software”**

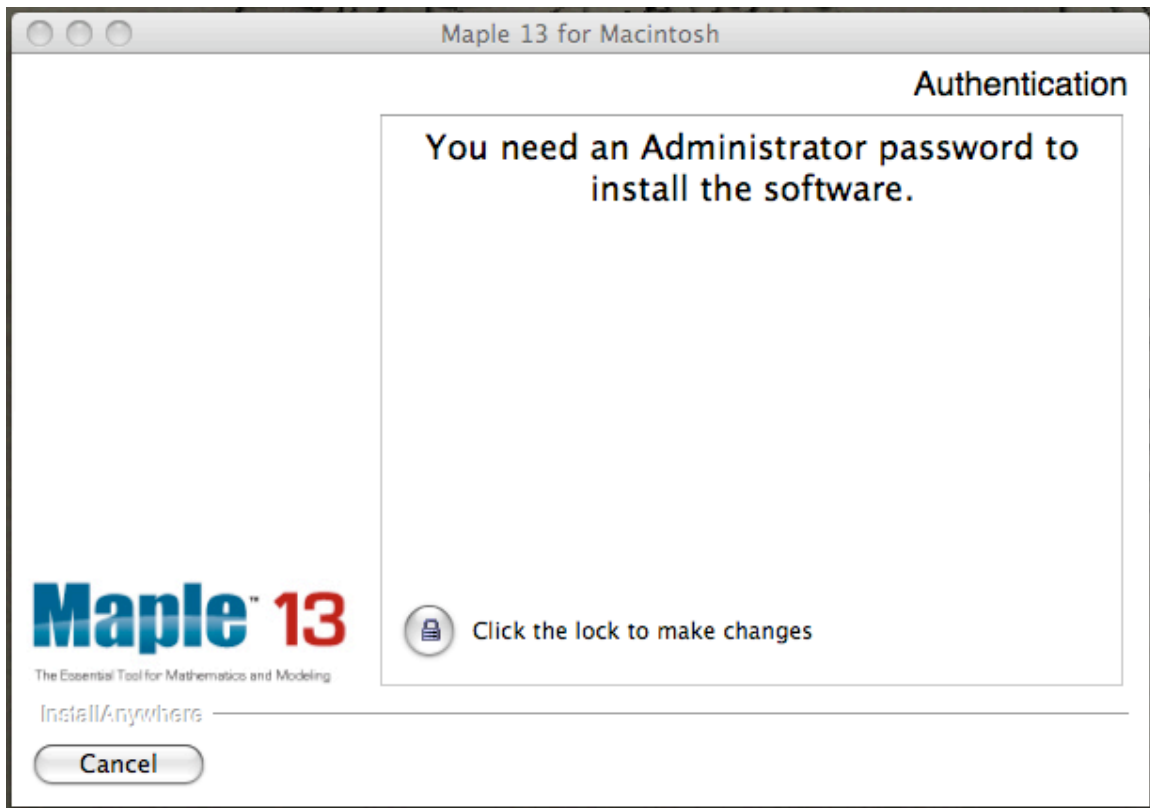


Scroll down again to locate and open the folder “**Maple 13**”



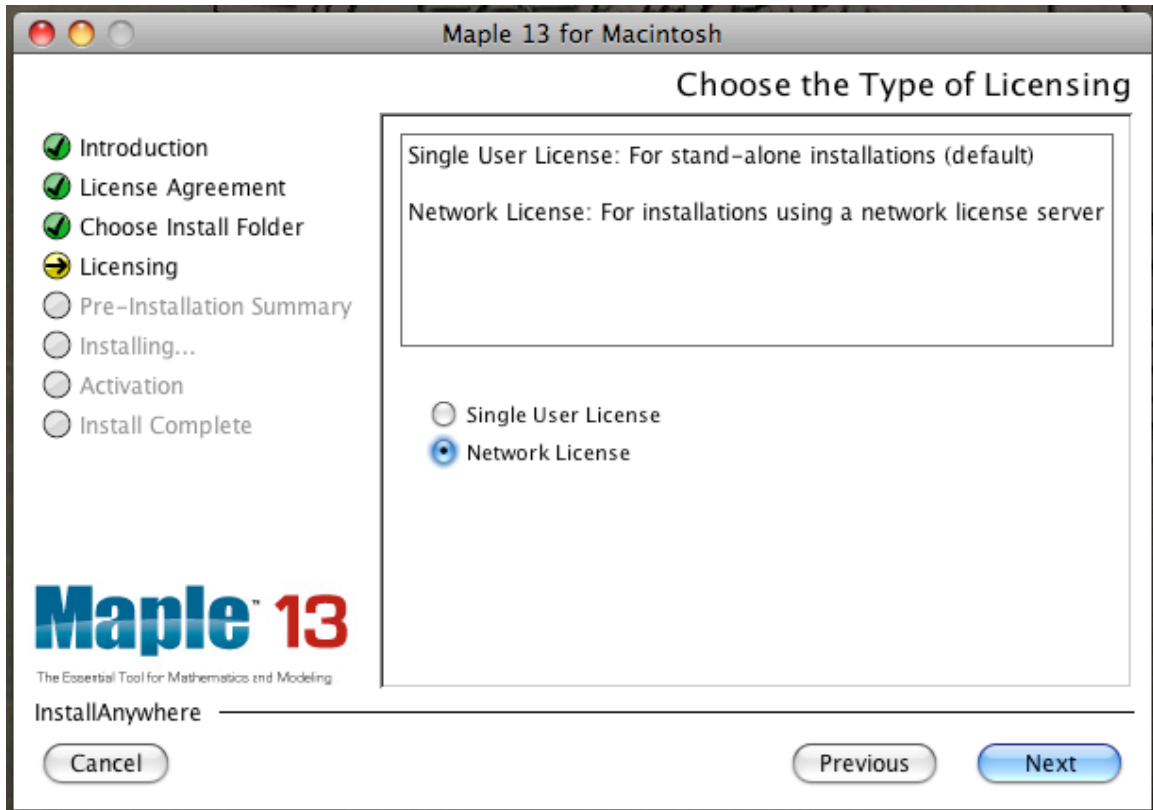
Be sure to select the folder titled “**MacOSX**” and follow the folders through to “**Maple13MacInstaller**”

The following window may open



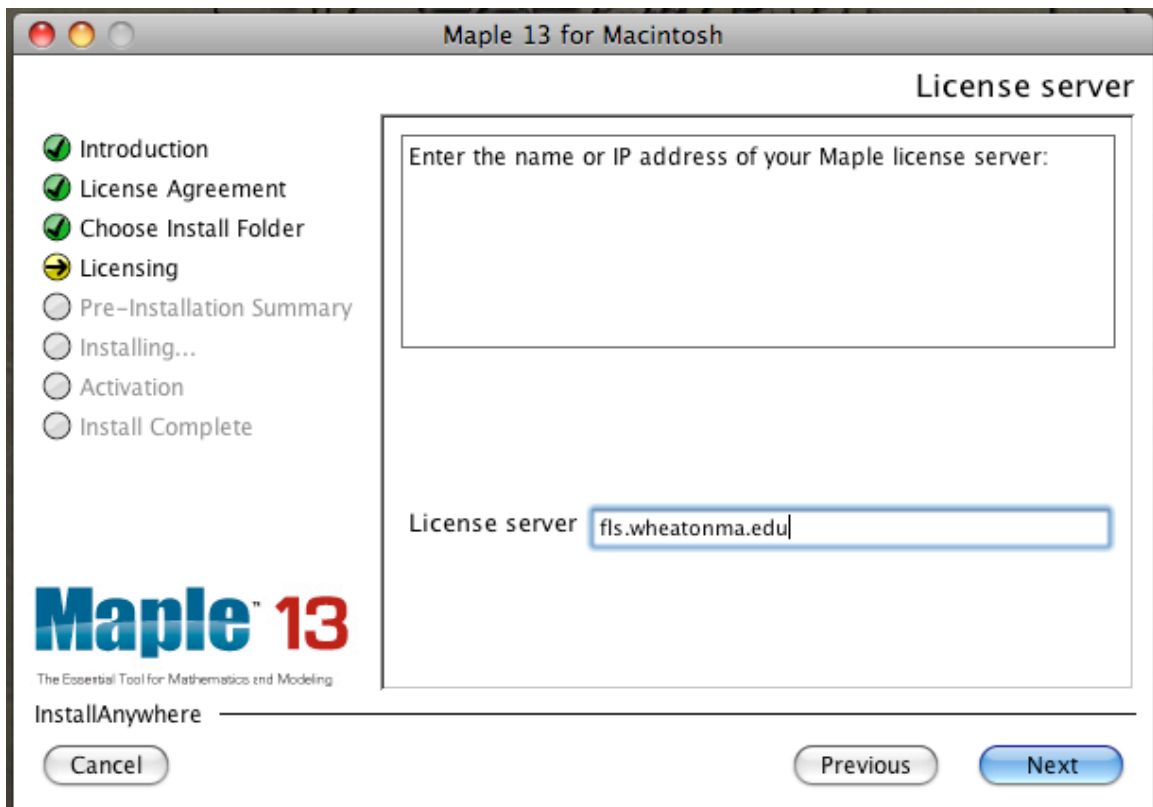
If so, simply click on the lock icon and enter your user name and password for the computer.

Proceed through the installation software with the **“Next”** button, accepting the license terms, until you reach this window



Select **“Network License”** and then **“Next”**

For **“License server”** enter: `fls.wheatonma.edu`



Select “**Next**” and then “**Install**” and Maple will begin installing. It may take a few minutes to complete. Maple 13 can be found on your “**Macintosh HD**” under the “**Applications**” folder.

You must be connected to the campus network via a wired or wireless connection in order to use Maple.

If you have problems with installing Maple, please email ddemelo@wheatonma.edu with details about your installation problem.